

CE500

Quick Start Guide

Use your phone for more than just talking

MP3 *made* EZ

cingular
raising the bar.  SM

Life's Good  LG



CE500 Music Features



Music Formats

LG Music Manager and the CE500 only recognize **MP3**, **AAC** and **AAC+** formats. If you want to play music from a CD or other source, you will first have to convert it to one of these formats.

TransFlash Memory Port



1 Getting Started

TransFlash
Adapter
case



TransFlash
card



Inserting the TransFlash™ Card

Before starting the software installation process, insert the TransFlash card into your phone. The small TransFlash card is packaged inside the adapter case.

1. Slide out the card from the bottom of the adapter case using your fingernail. <
2. Open the TransFlash memory port on the lower left side of the phone by lifting the lower back lip of the cover with your fingernail.
3. Insert the TransFlash card with the gold contacts facing up as shown. Push the card in gently until it snaps firmly into place. >
4. Close the memory port cover.



2 Installing Music Manager

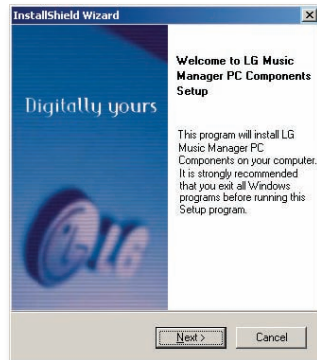
Installing LG Music Manager



LG Music Manager only supports the Windows operating system.

You will need to install the LG Music Manager software onto your PC to download music files to your phone.

1. Insert the Music Manager CD in your PC.
2. When the **Installer** screen appears, click **OK**.
3. A **PC Components Setup** screen will appear. Click **Next** to begin installation, then **Next** to choose a file location, **Next** to do a Typical installation, and **Next** to choose a folder. The program will then install.
4. When the **Setup Complete** screen appears, click **Finish**.



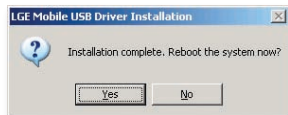
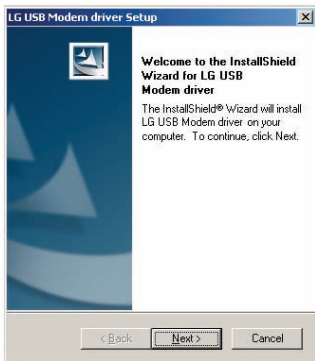
Questions about LG Music Manager? Call LG at 1-800-793-8896 or e-mail customerservice@lge.com.

3 Installing the USB Driver

Installing the USB Driver on the PC

At the end of the previous step 4, the **USB Driver Install** screen will appear.

1. Choose a Setup Language from the list provided on screen and click **Next**.
- < 2. Click **Next** again to initiate the driver installation.
3. Click **Yes** to reboot your PC. >



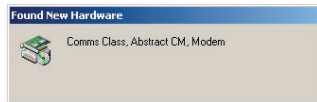
4 Connecting the Phone & PC

Reminder: Make sure you have installed the LG Music Manager software before connecting the USB cable.




Connecting the USB Cable

1. Power on the phone.
2. Connect the phone to the PC using the USB data cable provided with the phone. (The USB port is on the bottom of the phone.)
3. When the connection is made, a **Found New Hardware** wizard will acknowledge the link. Click **Next** to make the connection, and **Finish** at the end.




Launching LG Music Manager

1. With the phone and PC connected via USB, launch LG Music Manager by double clicking on the LG icon  on your desktop.

5 Transferring Music



Transferring Music to the Phone

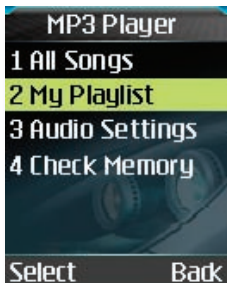
1. Click on the folder icon  to the right of the Directory field on the LG Music Manager screen.
2. Browse your hard drive to find your MP3, AAC or AAC+ music files and press **OK**. Your music file names will populate the left side of the screen.
3. Click the **Connect** button.
4. Highlight a file in the left window, then click the **Download** button to transfer the file to the phone. The phone will display a **Synchronizing** screen.
5. To transfer files from phone to the PC, highlight the file in the phone image and click the **Upload** button.



6 Setting Up a Playlist

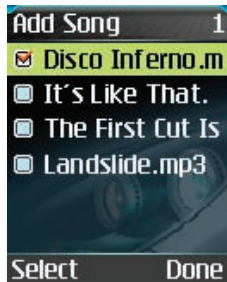
Playing Music on the CE500

Once you have finished transferring music, take a few minutes to set up a playlist. You will need a playlist to be able to launch music with the phone flip closed.



Setting Up Your Playlist

1. With the phone open, press the **MP3 Key** and select **My Playlist (2)**.
2. Press the **Left Soft Key** for **Add**.
3. Press **OK** to select each song you want to appear on the playlist, using the Navigation Key to scroll down the list.
4. Press the **Right Soft Key** for **Done**.



Use of actual songs is for demonstration purposes only; song availability depends on your music service.

7 Playing Music



Launching Music with the Flip Closed

1. Make sure you've set up a playlist.
- < 2. Press and *hold* the ►/|| key. Your playlist will appear on the screen.
3. Press ►/|| to start the music.
Use the external keys to control the MP3 player.
4. To exit the music player, press and *hold* the ►/|| key.

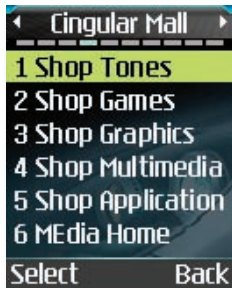
Launching Music with the Flip Open

1. Press the **MP3 Key**, select **All Songs (1)** or **My Playlist (2)**, and press **OK**.
2. Press the **Right Soft Key** for **Play**. >
To pause, press **OK**. To go to the previous or next song, press **left** or **right** on the Navigation Key.



8 Downloading Ringtones

Buying/Downloading Music Ringtones



1. From standby mode, press the **Left Soft Key** for **Menu** and select **Cingular Mall (4)**.

< 2. Select **Shop Tones (1)** and press **OK**.

3. Select **Music Tones** and press **OK**.

4. At the next screen, select the genre of your choice and press **OK**.

5. Select the specific music category and press **OK**.

6. Select a ringtone and press **OK**.

7. Select **Buy Now** and press **OK**.

